

Product structural features

3-way、4-way plug valve is applicable to change the media flowing direction or to distribute the media,that are used in various industries such as、 petroleum,chemical industry,pharmacy,chemical fertilizer,power,Industry etc.under nominal pressure class 150-900Lbs,PN 1.0-16.0,Working temperature -29℃-550℃.

Main structural features

- 1、 The product has reasonable structure, reliable sealing,excellent performance and beautiful appearance.
- 2、 According to different conditions ,the 3-way、 4-way plug valve can be designed into diverseful media flowing forms(eg."L" type or "T"type) or all kinds of materials (eg.Iron、 cast steel、 stainless steel)or unlike sealing froms (eg. Metal to metal ,sleeve Type ,lubricated ,etc)
- 3、 The materials of the parts and sizes of flanges can be reasonably configured according the actual operation condition of the requirements of the customers,so as to meet the various needs of engineering.

Technical specifiction

Structural formation	BB-BG
Driving maner	Wrench,worm & worm gear pneumatic,electric-actuated
Design standard	AP1599、 AP16D、 GB12240
Face to face	ASME B16.10、 GB12221、 DIN3202
Flange ends	ASME B16.5、 JB79、 GB9113、 DIN2543-2545
Test & inspection	AP1598、 AP16D、 GB13927、 DIN3230

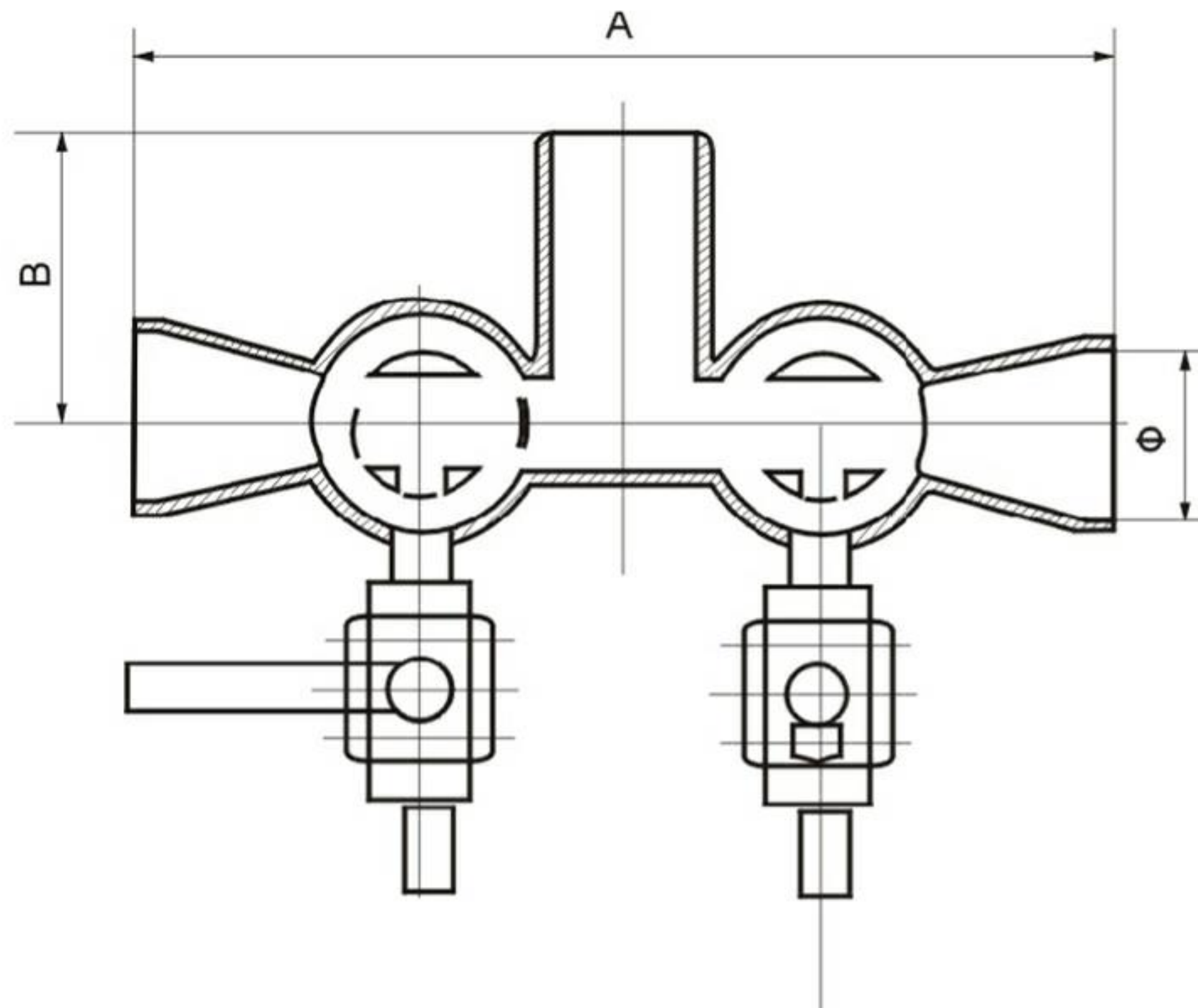
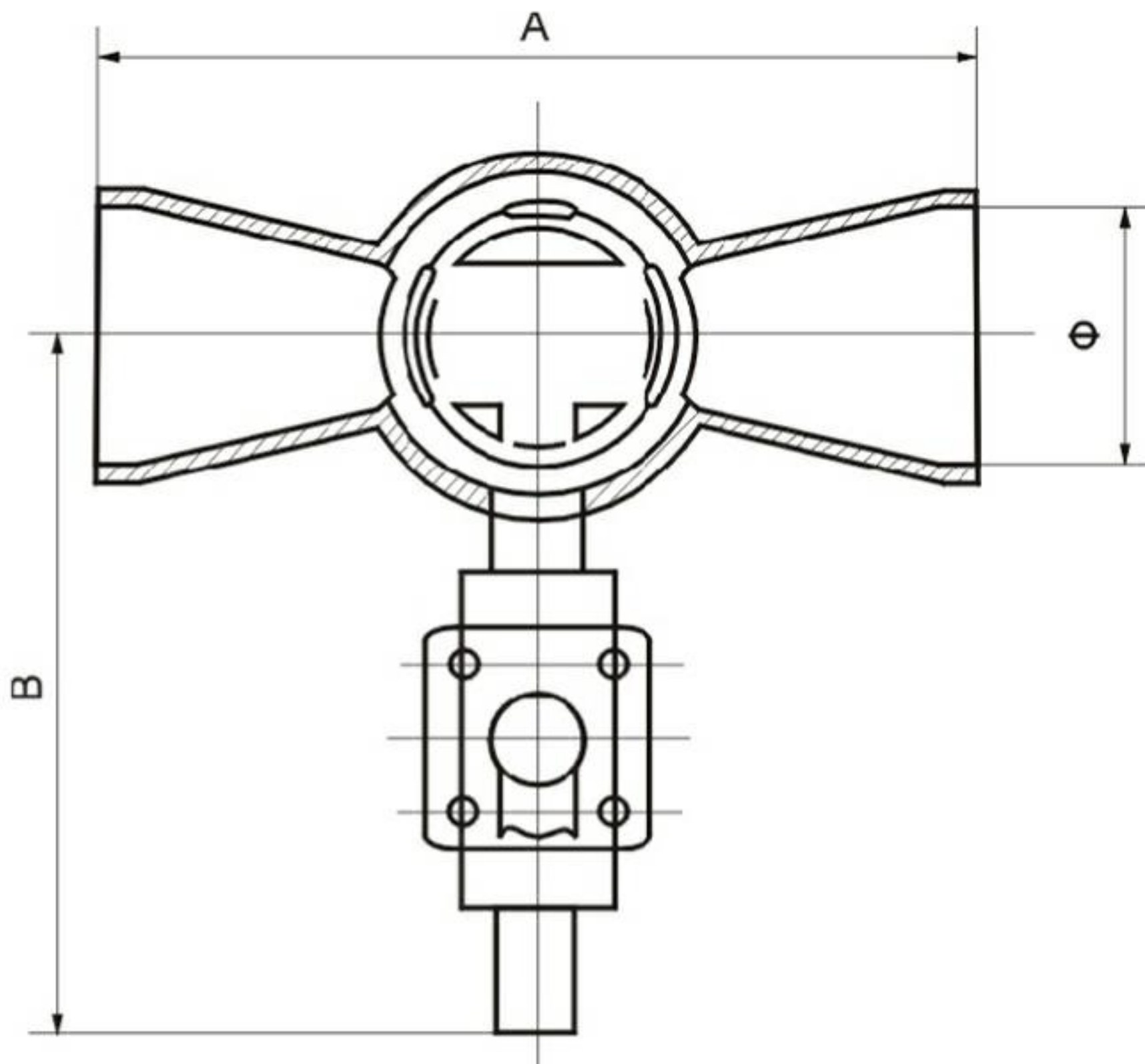
Products performance specitication

Nominal pressure(LB)	Shell test (MPa)	Sealing test (MPa)	Nominal pressure(LB)	Shell test (MPa)	Sealing test (MPa)
150	3.0	2.2	1.6	2.4	1.76
300	7.5	5.5	2.5	3.75	2.75
600	15.0	11.0	4.0	6.0	4.4
900	22.5	16.5	6.4	9.6	7.04
			10.0	15.0	11.0
			16.0	24.0	17.6

Note:The size of serial valve connecting flange can be designed according to customers’ requirement.

Plug valves with single or double flush

IN PACE WITH THE WORLD TO FORM AN CHINA MODEL



Main dimension and weight

NPS Nominal diameter (in)	150LB (SINGLE FLUSH)			NPS Nominal diameter (in)	150LB (BOUBLE FLUSH)			
	A	B	Φ		A	B	C	Φ
2	216	278	54.8	2	432	115	278	54.8
3	305	278	82.8	3	585	140	293	82.8
4	356	293	108.2	4	686	150	308	108.2
6	432	308	161.5	6	842	200	320	161.5
8	508	320	211.6	8	970	270	270	211.6
10	572	333	264.7	10	1144	350	350	264.7

300LB (SINGLE FLUSH)					300LB (BOUBLE FLUSH)			
	A	B	Φ		A	B	C	Φ
2	216	278	54.8	2	432	115	278	54.8
3	305	278	82.8	3	585	140	293	82.8
4	356	293	108.2	4	686	150	308	108.2
6	432	308	161.5	6	842	200	320	161.5
8	508	320	211.6	8	970	270	270	211.6
10	572	333	264.7	10	1144	350	350	264.7